

What is Hydrolock?

To join two panels together, Multipanel Classic shower wall panels come with a precisely engineered Hydrolock edge detail to create an extremely tight, almost invisible, watertight joint.

Technical information

- When manufacturing Hydrolock joints, 18.5mm is lost from the original panel width, e.g.

2400 x 598mm = 2400 x 579.5mm
finished face size

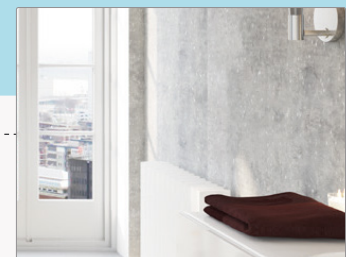
2400 x 1200mm = 2400 x 1181.5mm
finished face size
- Hydrolock panels are supplied as standard with a tongued edge and a grooved edge
- Hydrolock panels should be conditioned at normal room temperature for **48–72 hours** prior to installation, particularly during cold spells
- Panels should be fitted “grooved” edge first, and the “tongued” edge of the next panel angled in and pushed back until it snaps into place
- A narrow bead of silicone sealant must be applied to the shoulder of the “tongue”
- Accuracy of pattern alignment between panels may vary depending on the scale of the pattern
- Full fitting instructions should be read prior to installation



Fit 'grooved' edge first, and the 'tongued' edge of the next panel angled in



Push 'tongued' edge back until it snaps into place



Discreet, watertight joint